

# Going to the Natick Mall



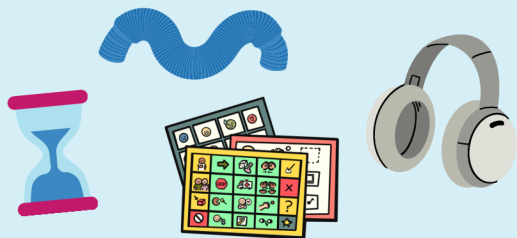
I am going to take a trip to the Natick Mall. Many stores at the Natick Mall are certified Autism Welcoming.



I can look for the sign and if I see it, the store will have a sensory kit, extra friendly and trained staff.



If I need a sensory break while I am at the Natick Mall, I can go to the Autism Welcoming Calm Corner located on the upper level across from Natick Play.



A sensory box with fidgets, headphones, and visual supports are there to help me feel calm.



If the Autism Welcoming Center is open, I can go inside and use their sensory space, and a staff member will assist me.



It is fun to go to the Natick Mall.